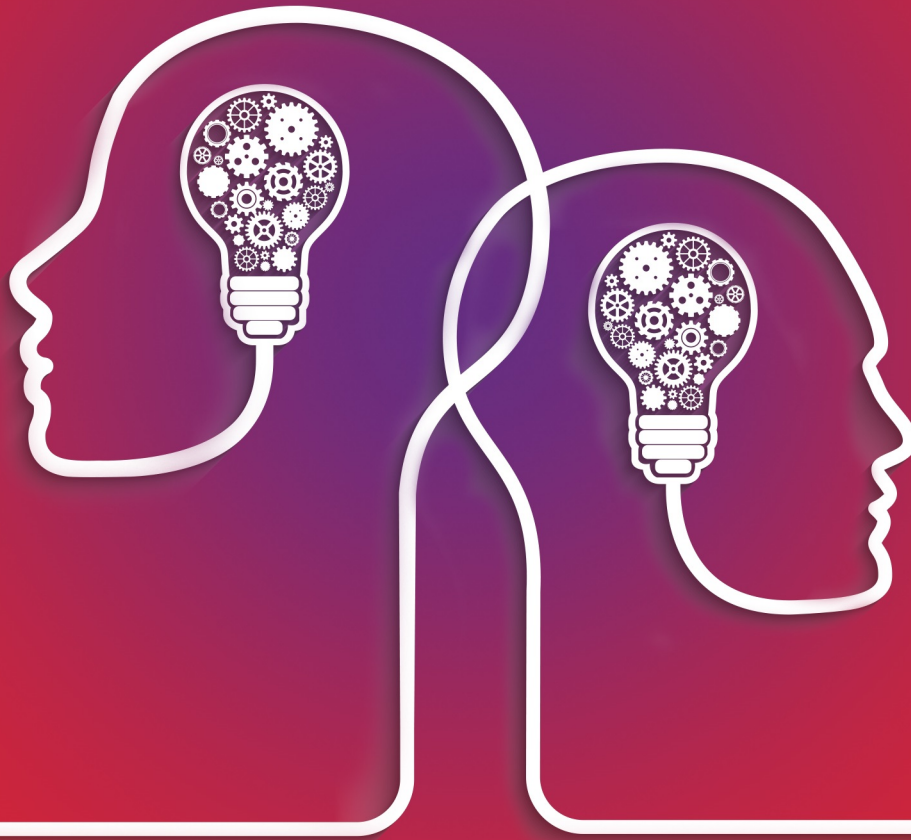
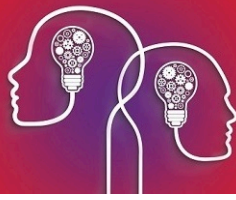


Bp VIP.net
Synergy Setup Guide



VIP.net knowledge base 



Legal notices

Copyright © 2019 Best Practice Software. All rights reserved.

Best Practice Software believe the information in this User Manual is accurate as of its publication date. The information is subject to change without notice.

You may only copy, change, or use the User Manual as required for your own use as permitted under the End User Licence Agreement or the Order Form. User Manuals are intended for reference only and do not preclude the need for training.

Best Practice Software Pty Ltd	Best Practice Software New Zealand Ltd
PO Box 1911	PO Box 1459
Bundaberg Queensland Aus-	Hamilton New Zealand 3240
tralia 4670	
www.bpssoftware.net	

The information contained in the User Manual is intended to be a guide only. Best Practice Software does not provide any warranty in relation to its currency, accuracy, or completeness and, unless otherwise required by law, will not accept any liability in relation to any loss or damage suffered by you or any third party in reliance on the information contained in the User Manual.

Last updated: 16 July 2018

This User Manual is sourced from the Best Practice Software Bp VIP.net Ruby [Knowledge Base](#).



Integrate with Synergy

Synergy is a software application that acts as a proxy between VIP and some eye machines. Synergy is not supplied or maintained by Best Practice Software. For more information on installing Synergy, contact Synergy Support. The instructions below assume that Synergy has been successfully installed on your practice network.

Bp VIP.net communicates with Synergy in two ways:

- Bp VIP.net creates HL7 ADT and ORM type messages and delivers the messages to a nominated folder. The message files contain patient demographics and patient appointment booking data. Bp VIP.net Services polls the Bp VIP.net database periodically to determine if there are messages to create.
- From the Medical Desktop, Bp VIP.net can launch the Synergy Web application for the current patient.

***Note:** Because the Synergy interface relies on Bp VIP.net Services to poll the database, Bp VIP.net Services must be running for data to be transferred from Bp VIP.net to Synergy. Contact Best Practice Software Specialist Product Support if you need more information on installing and starting Bp VIP.net Services.*

Before you begin

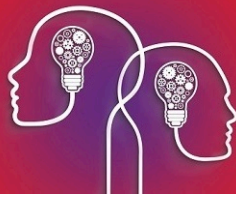
You will need to know the following information before you can set up your practice's Synergy interface:

- Arrange Synergy integration licence with Best Practice Software and obtain Synergy setup zip files.
- Obtain the **Transfer Folder URL** from Synergy. This URL is the Synergy gateway used by the interface.
- Obtain the **patient matching method** your interface will use from Synergy. There are a number of different ways to match patients between the two systems. Synergy Support can assist in selecting the correct method for your practice.

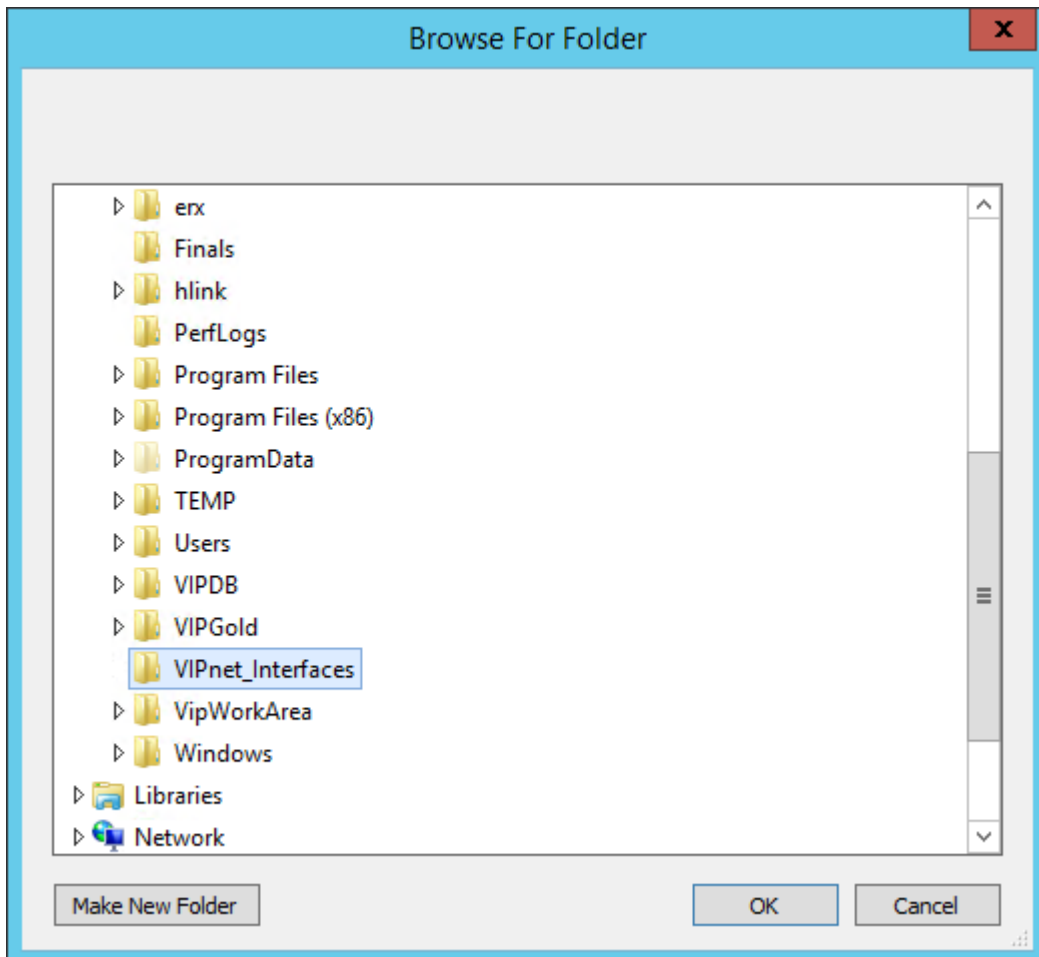
Set up the Synergy interfaces

Install interfaces

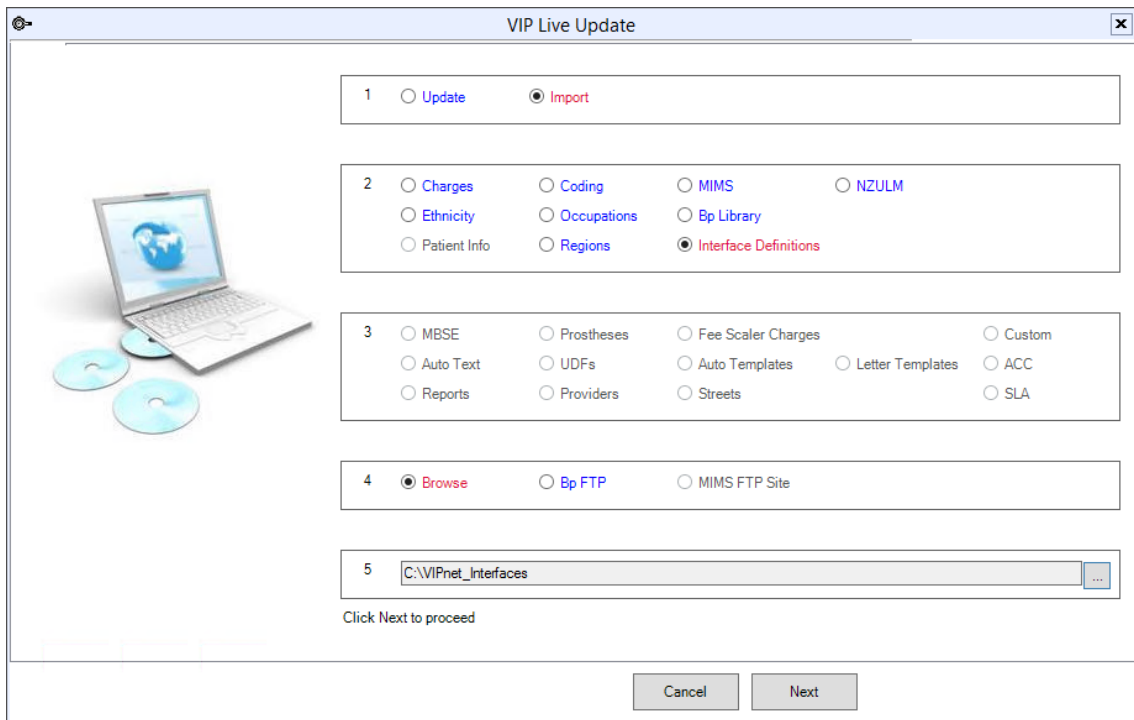
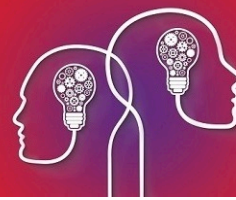
1. If you haven't already, contact Best Practice Software Specialist Product Support and obtain the two installation files for Synergy integration:
 - Synergy Launch Web.zip
 - Synergy ORM Worklist.zip
2. Create a folder on the Bp VIP.net server machine or an accessible location on the practice network, and copy the zip files to that folder.
3. Log in to Bp VIP.net as a Bp VIP.net Administrator.
4. Select **File > Utilities > Live Update** to open the **VIP Live Update** screen.
5. In the **VIP Live Update** screen:



- Section 1 — Select **Import**.
 - Section 2 — Select **Interface Definitions**.
 - Section 4 — Select **Browse**.
6. Click the ellipsis button ... at the end of Section 5. Browse to the folder you created in step 2 and click **OK**.



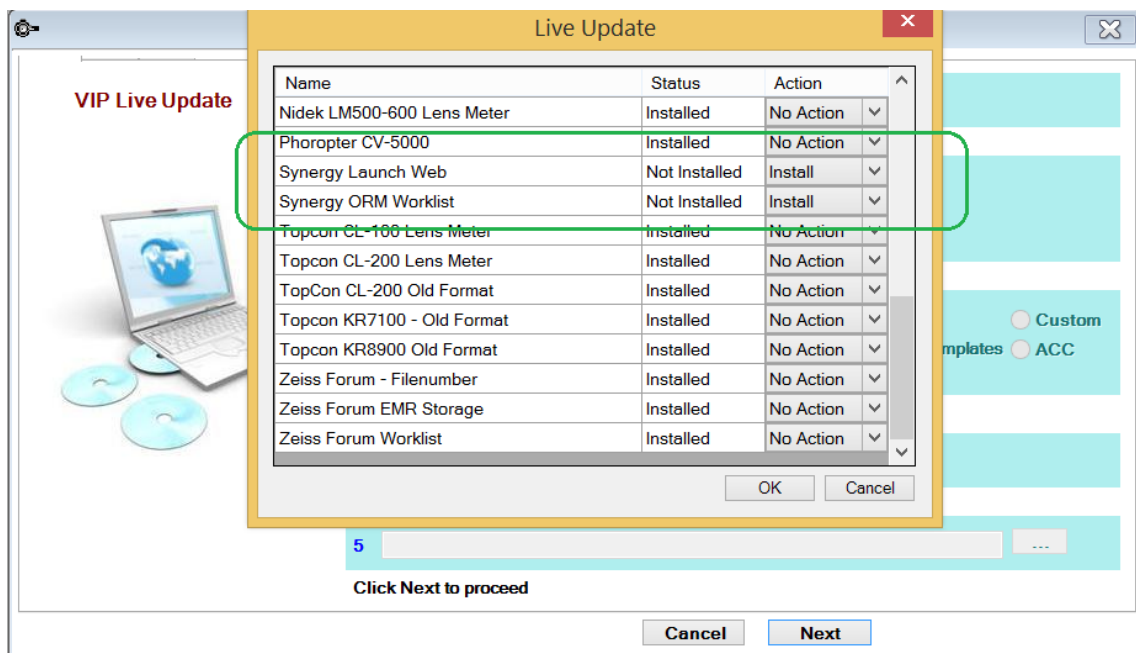
7. Section 5 will be updated with the selected folder.

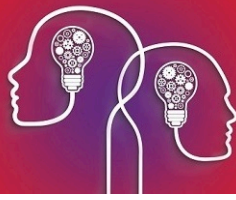


8. Click **Next**. In the **Live Update** screen, select 'Install' in the **Action** column for the two interfaces:

- Synergy Launch Web
- Synergy ORM Worklist.

In the following example, there are a number of interfaces to select from. The two Synergy interface files have not been installed and have their **Action** set to Install.





9. Click **OK**. Bp VIP.net will install the interfaces.
10. In Windows, create a folder on the hard disk of the Bp VIP.net server machine called 'Synergy' (such as 'C:\Synergy') and **share the folder** to all users. The Synergy folder will contain the data transfer files from Bp VIP.net to Synergy.

Note: You **must** make the Synergy folder you created in step 8 available to all users, or Bp VIP.net will not be able to access this folder to transfer data. Your IT support can assist with folder permissions in Windows.

Set up interfaces

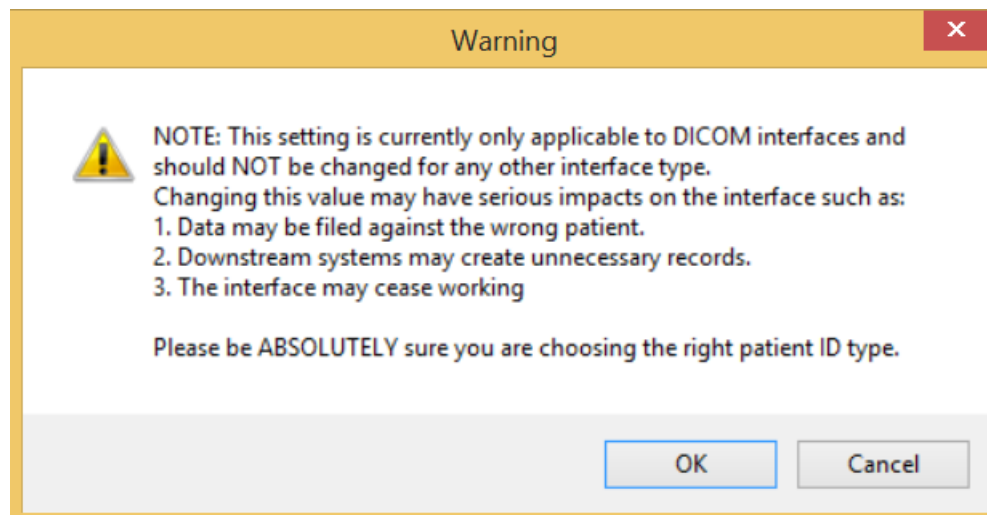
Synergy Launch Web

1. In Bp VIP.net, select **Setup > Medical > External Interfaces**. Click **New** in the **Maintain External Interfaces** screen.
2. Enter a **Name** of 'Synergy Launch Web Use'.
3. Select the **Interface** 'Synergy Launch Web'.
4. Enter the **Transfer Folder** URL supplied to you by Synergy.

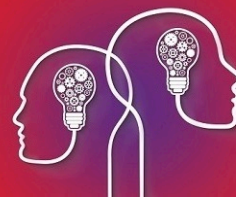


Important: The most recent known URL used by Synergy, shown in the example, is 'https://host.topconsynergy.com/CCR0000/'. You **must** confirm the transfer folder URL with Synergy, as the URL is subject to change.

5. Select the **Patient Matching** that your Synergy installation requires. Bp VIP.net will display a warning.



6. Click **OK**. The example below shows a **Patient Matching** selection of 'Internal unique id'.



Maintain External Interfaces

Browse Details

Name: Synergy Launch Web Use Tag: []

Interface: Synergy Launch Web

Workstation: []

Program Folder: []

Transfer Folder: https://host.topconsynergy.com/CCRR0000/

Patient Matching: Internal unique Id

Enter the Web Address (URL) into the Transfer Folder textbox.
Dated December 2016 - the Web Address is
https://host.topconsynergy.com/CCRR0000/

Test OK Cancel

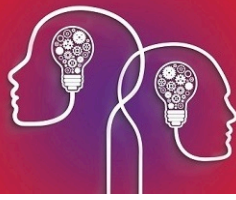
7. Click **OK**.

Synergy ORM Worklist

1. Click **New** again in the **Maintain External Interfaces** screen.
2. Enter a **Name** of 'Synergy ORM Use'.
3. Select the **Interface** 'Synergy ORM Worklist'.
4. In the **Transfer Folder** field, click the ellipsis button ... and browse to the 'Synergy' folder that you created in step 8 of [Install interfaces on page 3](#). Click **OK**.

In the example below, the folder is 'C:\Synergy'.

5. Select the **Patient Matching** that your Synergy installation requires. Bp VIP.net will display a warning.
6. Click **OK** to close the Warning popup. The example below shows a **Patient Matching** selection of 'Internal unique id'.



Maintain External Interfaces

Browse | **Details**

Name: Synergy ORM Use Tag: []

Interface: Synergy ORM Worklist

Workstation: []

Program Folder: []

Transfer Folder: C:\Synergy

Worklist Filter Settings...

Patient Matching: Internal unique Id

This interface ensures ORM \ ADT messages are sent for the nominated appointment types \ locations etc. To configure which types and locations etc are sent, please click on the "Worklist Filters" button. Enter a shared folder in the "Transfer Folder" field above. The VIP Service Controller Must be running.

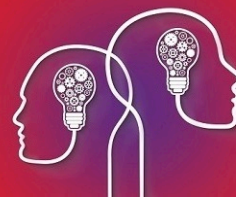
Test OK Cancel



Important: The **Patient Matching** selection for the Launch Web interface and the ORM Worklist interface definitions must be the same.

7. Click **Worklist Filter Settings**. The **Work List Filters** screen will appear.
8. Select the Page Owners, Locations, and Appointment Types that you want transferred to Synergy when new records are created or changes are made.

In the example below, all options have been ticked, which means any new patients or appointments, or any updates to patients or appointments will be transferred to Synergy. If you did not select the Page Owner 1. 'Dr Harry Cardiology', for example, appointments booked for this provider would not be transferred to Synergy.



Page Owners	Locations	Appointment Types
<input checked="" type="checkbox"/> 1. Cardiology, Dr Harry	<input checked="" type="checkbox"/> CLINIC, Clinic	<input checked="" type="checkbox"/> Avail
<input checked="" type="checkbox"/> 2. Dermatology, Dr Fred	<input checked="" type="checkbox"/> HAM, Hamilton Hospital	<input checked="" type="checkbox"/> Leave
<input checked="" type="checkbox"/> 3. Ophthalmology, Dr Sarah		<input checked="" type="checkbox"/> NP
<input checked="" type="checkbox"/> 4. Orthopedic, Dr Nancy		<input checked="" type="checkbox"/> Oper
<input checked="" type="checkbox"/> 5. Recovery		<input checked="" type="checkbox"/> PO
		<input checked="" type="checkbox"/> Public
		<input checked="" type="checkbox"/> Rev

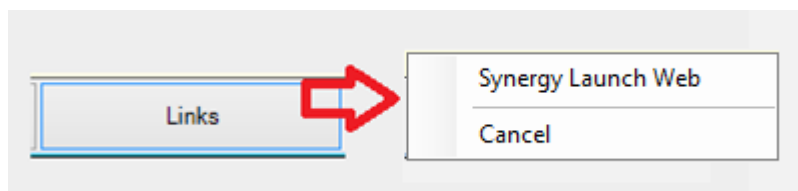
9. Click **OK** to return to the **Maintain External Interfaces** screen. Click **OK** to save the interface.

Synergy interface setup is complete.

Access Synergy from Medical Desktop

A Bp VIP.net operator requires a username and password defined in Synergy to access Synergy from Medical Desktop.

1. Press F11 to open the Medical Desktop.
2. Click the **Links** button and select **Synergy Launch Web**.



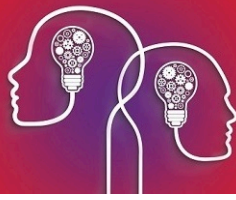
Note: Bp VIP.net will insert the Links button into the Medical Desktop when you import the Synergy interfaces from VIP Live Update.

3. Log in to the Synergy user interface using your Synergy login details. The Synergy application will open showing patient details for the patient in the Bp VIP.net snapshot.

The next time the same Bp VIP.net operator logs in to Synergy from Medical Desktop, Synergy will automatically log the operator in.

How does Bp VIP.net transfer data to Synergy?

If a new patient is created, or changes are made to the following fields, Bp VIP.net will create or



update the corresponding patient record in Synergy:

- NHI Number
- First name
- Surname
- DOB
- Sex
- Address

If any appointments associated with the selected Work List Filters are created or updated, Bp VIP.net will create or update the corresponding appointment book information in Synergy.

Bp VIP.net Services will look to see if Synergy (and other interfaces) has been installed, and if so, polls the database about every two minutes for new or updated records. If any changes or new records are created, the interface will export the data to Synergy. If the interface is scanning or exporting, the poll timer stalls and restarts when the process is finished.

When importing, the ORM Worklist will scan the patient details and appointment details database tables, and collect a maximum of 100 records at a time. The records will be delivered to the defined 'Synergy' folder ready for export to Synergy. Duplicate records are checked for.

When you install the Synergy interface for the first time, the process may take some time to transfer existing data, depending on the number of patients and appointments you have stored, for example.