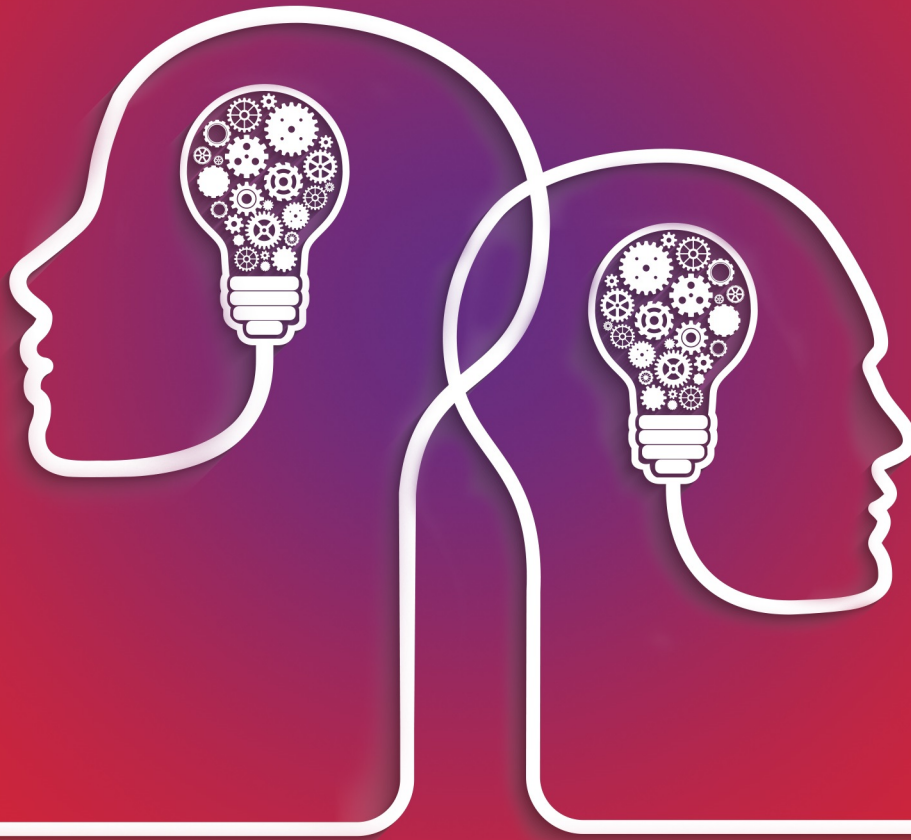




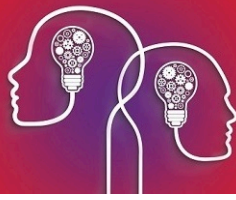
Best Practice
An evolution in medical software

Bp VIP.net

Epiphany Cardio Server Setup Guide



VIP.net knowledge base 



Legal notices

Copyright © 2019 Best Practice Software. All rights reserved.

Best Practice Software believe the information in this User Manual is accurate as of its publication date. The information is subject to change without notice.

You may only copy, change, or use the User Manual as required for your own use as permitted under the End User Licence Agreement or the Order Form. User Manuals are intended for reference only and do not preclude the need for training.

Best Practice Software Pty Ltd	Best Practice Software New Zealand Ltd
PO Box 1911	PO Box 1459
Bundaberg Queensland Aus-	Hamilton New Zealand 3240
tralia 4670	
www.bpssoftware.net	

The information contained in the User Manual is intended to be a guide only. Best Practice Software does not provide any warranty in relation to its currency, accuracy, or completeness and, unless otherwise required by law, will not accept any liability in relation to any loss or damage suffered by you or any third party in reliance on the information contained in the User Manual.

Last updated: 18 July 2018

This User Manual is sourced from the Best Practice Software Bp VIP.net Ruby [Knowledge Base](#).



Integrate with Epiphany CardioServer

Bp VIP.net integrates with Fuji Epiphany systems to allow synchronisation of relevant patient and appointment data, and to submit and receive cardiology examinations and results.

Fuji Epiphany clinical software (Epiphany) is not supplied or maintained by Best Practice Software. For more information on installing Fuji Epiphany software, contact Fuji Epiphany Support for the appropriate software. The instructions below assume that Epiphany software has already been successfully installed on your practice network.

Bp VIP.net communicates with Epiphany in two ways:

- Bp VIP.net creates HL7 messages and delivers the messages via TCP/IP. The message files contain patient demographics and patient appointment booking data. Bp VIP.net Services polls the Bp VIP.net database periodically to determine if there are messages to create.
- A Bp VIP.net TCP/IP listener waits for incoming connections from Epiphany. When an incoming connection is accepted, Bp VIP.net accepts incoming HL7 results, determines the patient record to which they belong, and imports the embedded PDF result into the patient's record. Unmatched results are added to **Unfiled Images** in Bp VIP.net, and can be manually allocated to the correct patient.

The Fuji Epiphany integration with Bp VIP.net will always use a **Patient Matching** method of 'Internal unique ID'.

Note: Because the Epiphany interface relies on Bp VIP.net Services to poll the database, Bp VIP.net Services must be running for data to be transferred between Bp VIP.net and Epiphany. Contact Best Practice Software Specialist Product Support if you need more information on installing and starting Bp VIP.net Services.

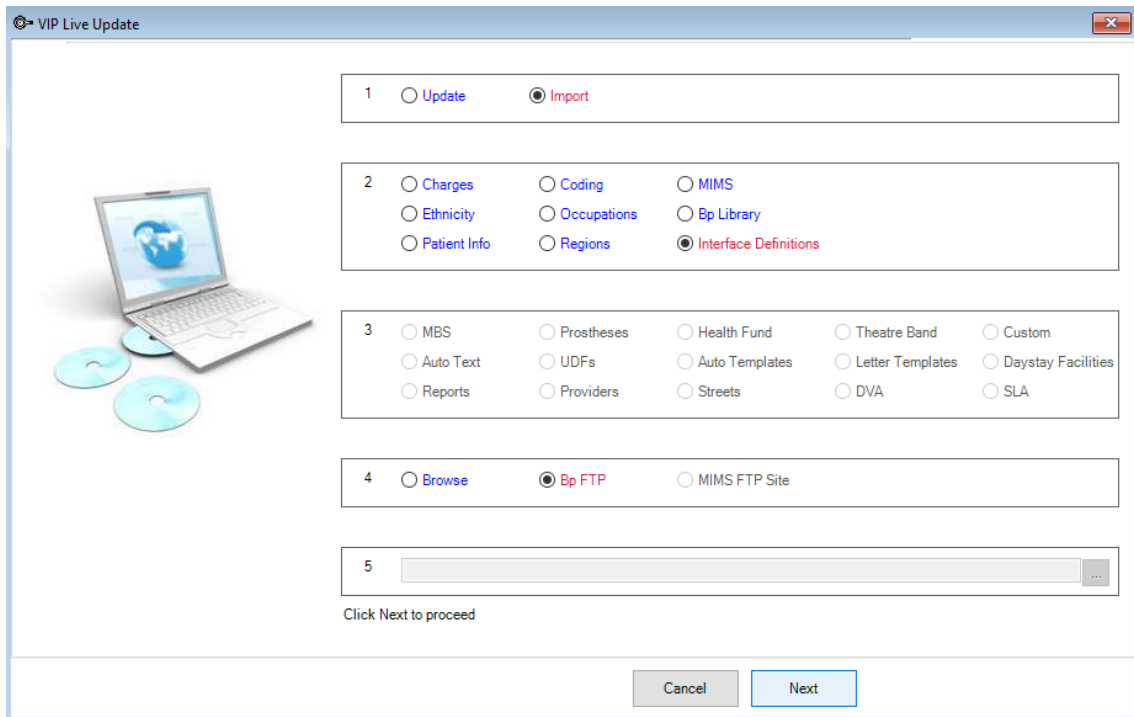
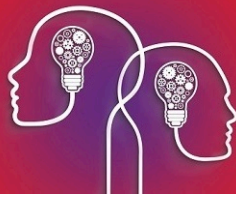
Before you begin

The Fuji Epiphany integration uses a nominated TCP/IP port, instead of a Windows folder, to send and receive data between the two systems. You will need to know the **port number** used by your Epiphany software when setting up the interface definition in Bp VIP.net.

Set up the Epiphany interfaces

Install interfaces

1. Log in to Bp VIP.net as a Bp VIP.net Administrator.
2. Select **File > Utilities > Live Update** to open the **VIP Live Update** screen.
3. In the **VIP Live Update** screen:
 - Section 1 — Select **Import**.
 - Section 2 — Select **Interface Definitions**.
 - Section 4 — Select **Bp FTP**.



4. Click **Next**.

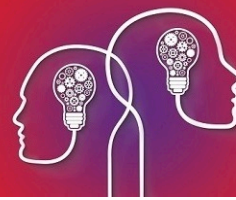
5. In the **Live Update** window, check the **Status** column for the two interfaces:

- Fuji ORM Worklist.
- Fuji Worklist

If the **Status** column shows 'Installed', you do not need to reinstall the interfaces. Click **Cancel**, and click **Cancel** again to close the **VIP Live Update** window. Go to [Set up interfaces on the facing page](#).

If the **Status** column shows 'Not Installed', select 'Install' from the **Action** column for both interfaces and click **OK**. The interfaces will be installed.

In the following example, the two Fuji interface files have been installed and require no action.



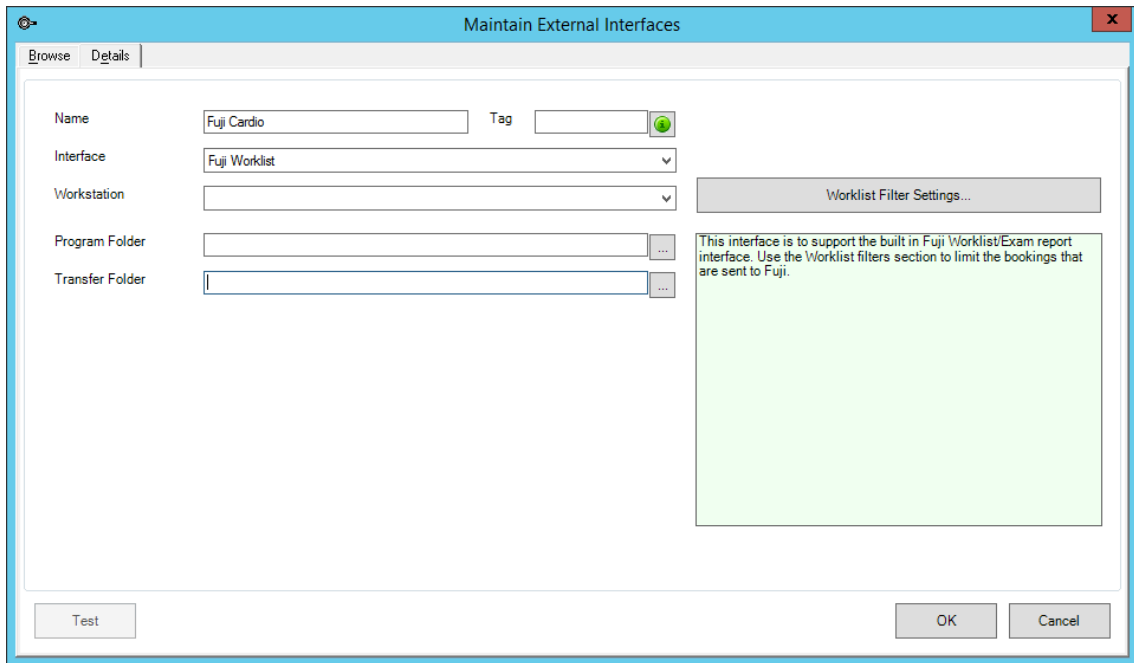
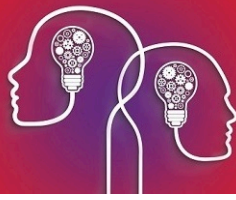
Name	Status	Action	
Appointment Booking	Installed	No Action	▼
Canon EOS Capture	Installed	No Action	▼
DICOM Multi-File Import	Installed	No Action	▼
Dicom Storage & Worklist SCP	Installed	No Action	▼
Fuji ORM Worklist	Installed	No Action	▼
Fuji Worklist	Installed	No Action	▼
Heyex Eye Explorer Remote Control	Installed	No Action	▼
Humphrey Field Analyser Service	Installed	No Action	▼
Humphrey HARK 597-599 Autorefractor	Installed	No Action	▼
Image Importer (Folder)	Installed	No Action	▼
Image Importer (TCP)	Installed	No Action	▼
IPIX	Installed	No Action	▼
LA350-360 Lens Meter	Installed	No Action	▼
Medmont Studio	Installed	No Action	▼

OK Cancel

Set up interfaces

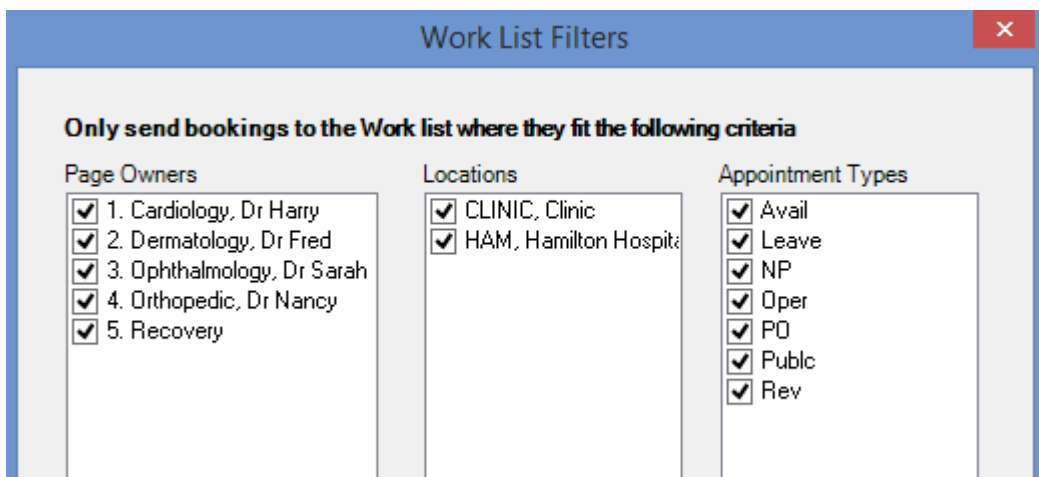
Add Fuji Worklist

1. In Bp VIP.net, select **Setup > Medical > External Interfaces**. Click **New** in the **Maintain External Interfaces** screen.
2. Click **New**. The **Details** tab will open.
3. Enter a descriptive **Name** for the Fuji Epiphany interface, such as 'Fuji Cardio'.
4. Select the **Interface** 'Fuji Worklist'.



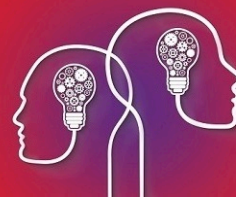
5. Leave the **Program Folder** and **Transfer Folder** empty.
6. Click **Worklist Filter Settings**. The **Work List Filters** screen will appear.
7. Select the Page Owners, Locations, and Appointment Types that you want transferred to Synergy when new records are created or changes are made.

In the example below, all options have been ticked, which means any new patients or appointments, or any updates to patients or appointments will be transferred to Fuji Epiphany. If you did not select the Page Owner 1. 'Dr Harry Cardiology', for example, appointments booked for this provider would not be transferred.



8. Click **OK** to return to the **Maintain External Interfaces** screen.
9. Click **OK** to save the interface.

Add Fuji Worklist



1. In the **Maintain External Interfaces** screen, click **New** to create the second interface. The **Details** tab will open.
2. Enter a descriptive **Name** for the Fuji Epiphany interface, such as 'Fuji Cardio ORM'.
3. Select the **Interface** 'Fuji ORM Worklist'.
4. This step is optional. Select where in Bp VIP.net you want descriptive text from Fuji Epiphany imported to:
 - Do not insert Tag (ignore)
 - Exam Field in medical note
 - Assessment Field in medical note
 - Management Field in medical note.

The screenshot shows the 'Maintain External Interfaces' window with the following details:

- Name:** Fuji Cardio ORM
- Interface:** Fuji ORM Worklist
- Workstation:** (empty)
- Insert Image Tag into:**
 - Do not insert Tag into a Medical Note
 - Append Tag to Exam Field
 - Append Tag to Assessment Field
 - Append Tag to Management Field
- Worklist Filter Settings...** button
- Test**, **OK**, and **Cancel** buttons at the bottom.

5. Click **OK** to save the interface.
6. An image file, contained within the incoming message, will be displayed in the Medical Desktop, in the filmstrip.

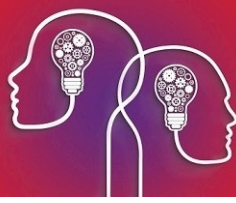
Set TCP/IP ports

The method will depend on the version of Bp VIP.net you are running. To find out which version of Bp VIP.net you have installed, select **Help > About** from the main menu and inspect the **Version** field.

When setting the ports that will be used, you also must ensure that your practice network and firewalls have been configured to allow connections on those ports. Your IT service provider can assist with network configuration.

For Bp VIP.net version 2.1.517.033 or later

1. Log in to the Bp VIP.net server as a Bp VIP.net administrator.
2. Select **File > Utilities > VIP Service Controller**. The **VIP Service Controller** window will appear.



3. Enter the incoming and outgoing ports to use:

- **Fuji Message IP & Port** — The IP address and port which the VIP services component will listen on for incoming HL7 embedded PDF messages.
- **Fuji Worklist IP & Port** — The IP address and port to which the VIP services component will send HL7 messages.

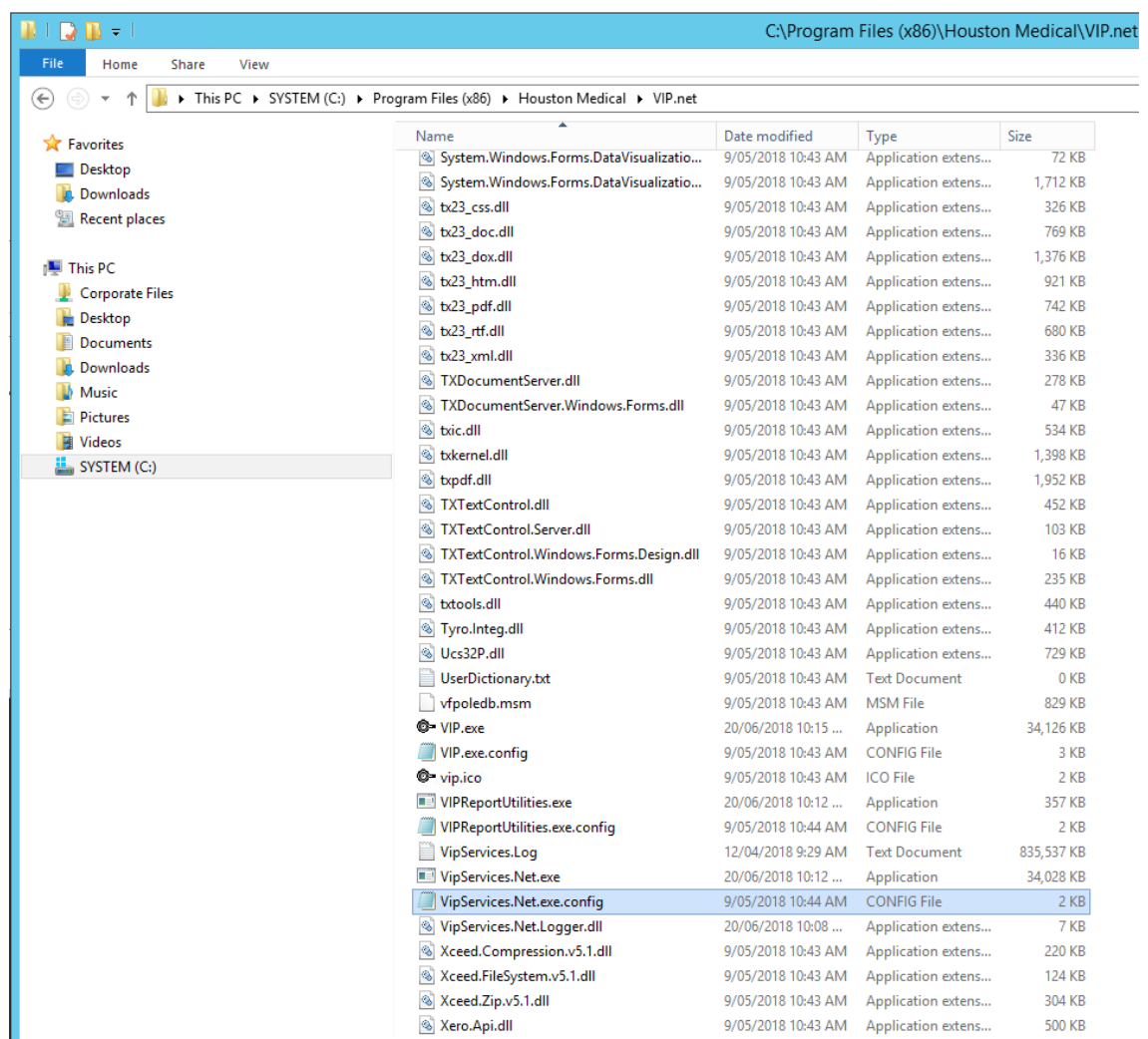
4. Click **Update Service**. Bp VIP.net will indicate if VIP Services has been updated. Click **OK**.

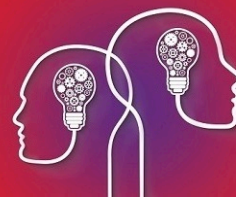
5. Restart VIP Services.

For Bp VIP.net versions earlier than 2.1.517.033

You need to edit the **VipServices.Net.exe.config** file to add the IP address and TCP/IP port that Bp VIP.net will use to send and listen for incoming updates.

1. On the Bp VIP.net server machine, open a Windows file explorer and browse to C:\Program Files (x86)\Houston Medical\VIP.net.





2. Right-click on the file **VipServices.Net.exe.config** and select **Edit**. The config file will open in Notepad.
3. Add the following lines inside the section `<appSettings>` `</appSettings>`

```
<add key="FujiReportMessagePort" value="IncomingPort"/>
<add key="FujiReportMessageIpAddress" value="IncomingIpAddress"/>
<add key="FujiWorklistPort" value="SendtoFujiPort"/>
<add key="FujiWorklistIpAddress" value="FujiIpAddress"/>
```

Where the values should be:

- IncomingPort / IncomingIpAddress — The IP address and port which the VIP services component should listen on for incoming HL7 embedded PDF messages.
- SendToFujiPort / FujiIpAddress — The IP address and port to which the VIP services component should send ADT, SIU, and ORM messages.

The following example shows the lines added with values. The exact values will depend on your specific practice and Fuji software.

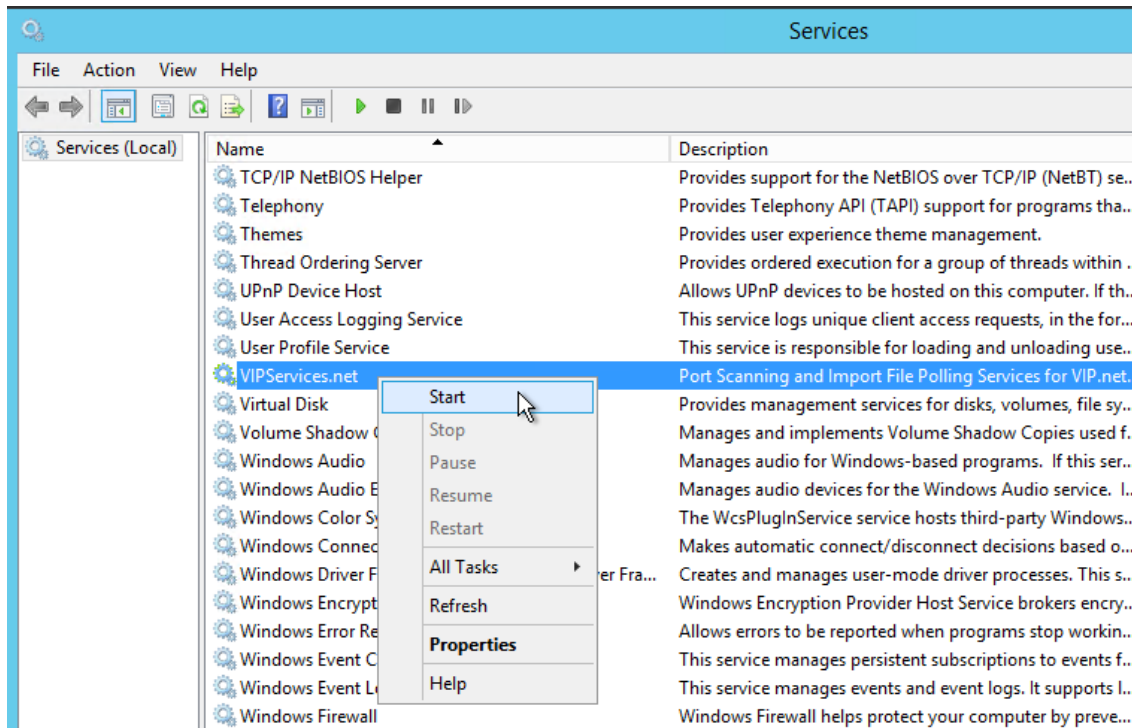
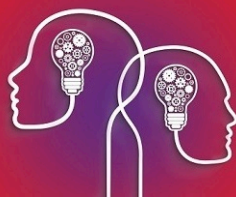
```
VipServices.Net.exe.config - Notepad
File Edit Format View Help
<?xml version="1.0"?>
<configuration>

  <appSettings>
    <add key="ServerName" value="VIPNET-PC"/>
    <add key="DatabaseName" value="VIPDB"/>
    <add key="IntegratedSecurity" value="True"/>
    <add key="LogFileName" value="VipServices.Log"/>
    <add key="DicomWorklistSCPPort" value="7001"/>
    <add key="DicomStoreSCPPort" value="7002"/>
    <!-- one of Detailed, ExceptionOnly, Normal-->
    <add key="LogLevel" value="Normal"/>
    <add key="UnmatchedDicomImageStoreFolder" value="d:\unmatcheddicom\"/>
    <add key="PollingInterval" value="15"/>
    <add key="DicomAETitle" value="VipServices.Net"/>
    <!--FUJI interface -->
    <add key="FujiReportMessagePort" value="7007"/>
    <add key="FujiReportMessageIpAddress" value="192.168.1.118"/>
    <add key="FujiWorklistPort" value="7008"/>
    <add key="FujiWorklistIpAddress" value="192.168.1.118"/>
  </appSettings>
```

4. Save the file and close Notepad.

Restart VIP services

Go to the Windows Services screen and stop and restart **VIPServices.net**:



Your IT provider or system administrator can assist with restarting this service.

Epiphany interface setup is complete.

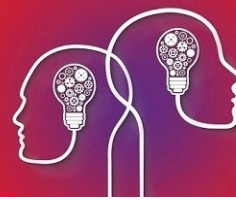
How does Bp VIP.net transfer data to Epiphany?

If a new patient is created, or changes are made to the following fields, Bp VIP.net will create or update the corresponding patient record in Epiphany:

- NHI Number
- First name
- Surname
- DOB
- Sex
- Address

If any appointments associated with the selected Work List Filters are created or updated, Bp VIP.net will create or update the corresponding appointment book information in Epiphany.

Bp VIP.net Services will look to see if Epiphany (and other interfaces) has been installed, and if so, polls the database about every two minutes for new or updated records. If any changes or new records are created, the interface will export the data to Epiphany. If the interface is scanning or exporting, the poll timer stalls and restarts when the process is finished.



When you install the Epiphany interface for the first time, the process may take some time to transfer existing data, depending on the number of patients and appointments you have stored, for example.

